

Dreamweaver CS4: Quick Visual Guide

1. Layout

Intro

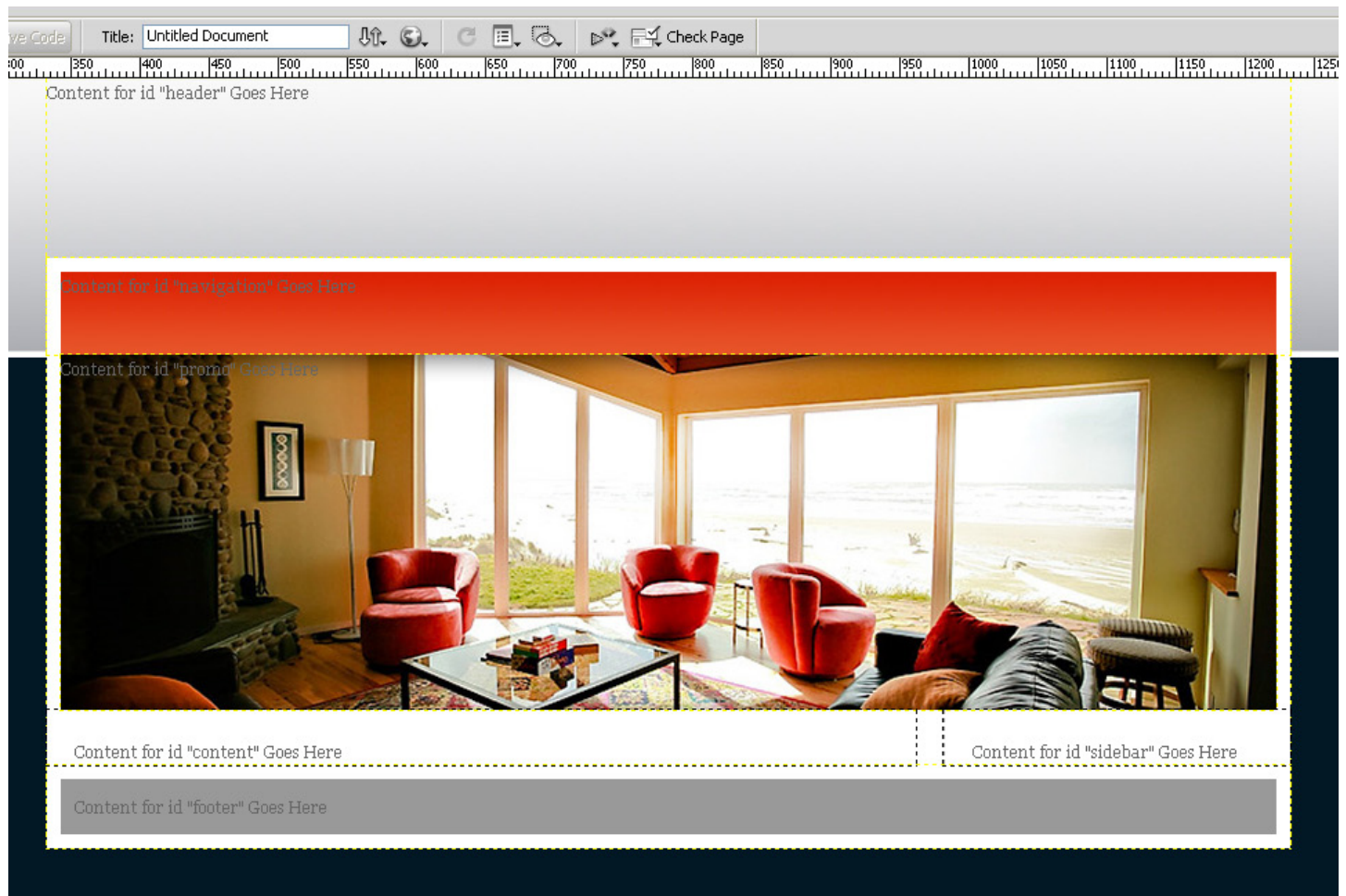
This tutorial will help you:

1. Define a new Dreamweaver web site
2. Create a new HTML file
3. Create a new CSS file and attach it to the HTML file
4. Create “images” folder and copy image files to it as you go
5. Create HTML/CSS layout

To guide you through the process you will find a screen-shot of every step (even the repetitive once). Each screen shot will have a small green arrow (➡) pointing out important section of the screen.

To get started you will need to download “[Slices.zip](#)” and extract it somewhere on your hard-drive.

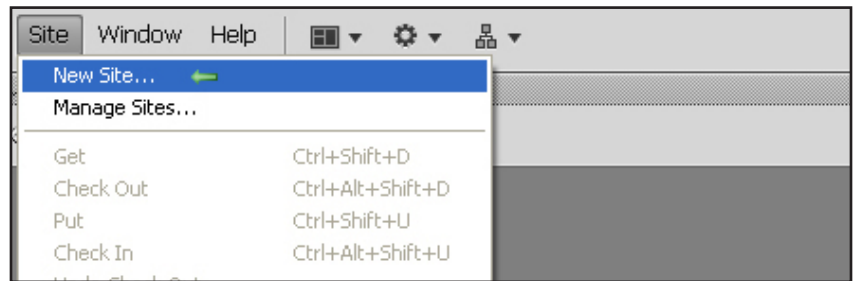
Final result of the tutorial



The result of this tutorial is just the “layout” without any content, or branding. Adding and formatting content will be covered in the second tutorial.

Define a Dreamweaver site

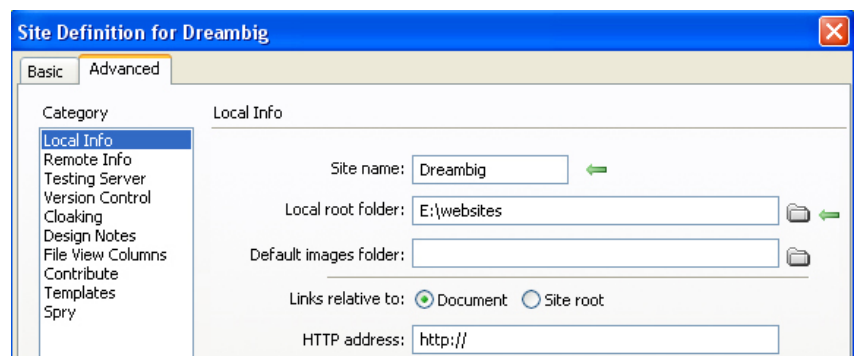
1. From the **Site** menu select **New Site**



2. Click the **Advance** tab

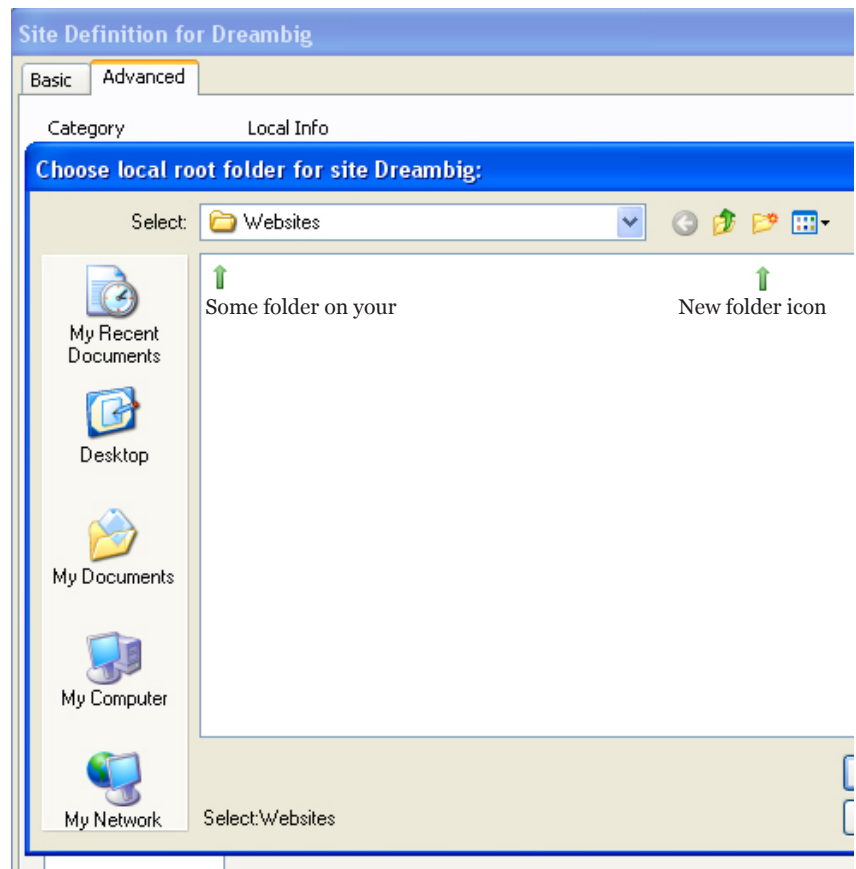
3. Type in “Dreambig” in the **Site name** field

4. Click the folder icon next to **Local root folder**

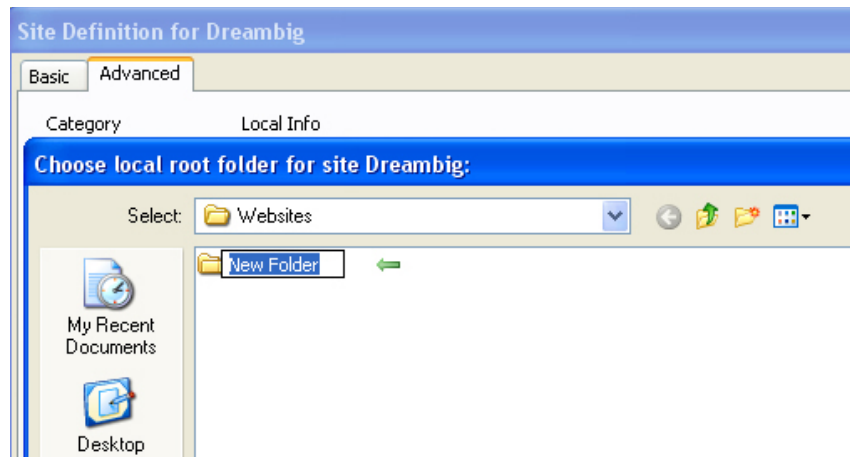


5. Navigate to a folder on your hard-drive where you want to create folder structure for “Dreambig” site. In this example the folder name is **Websites**.

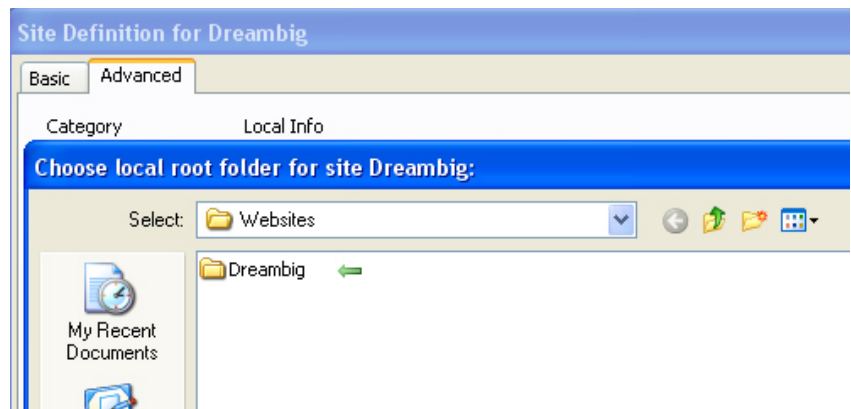
6. Click the **New Folder** icon



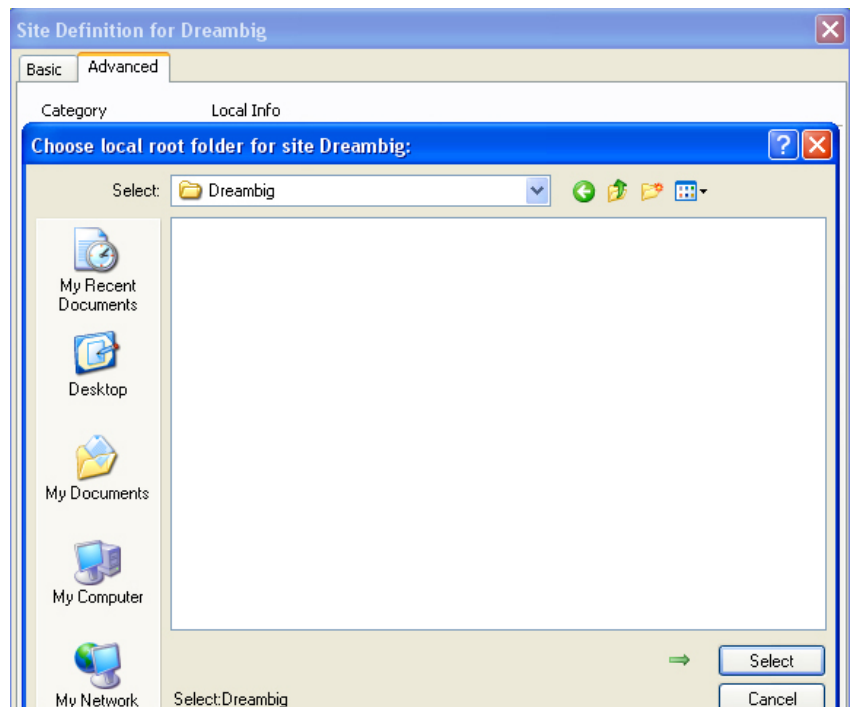
7. Rename **New Folder** to **Dreambig**



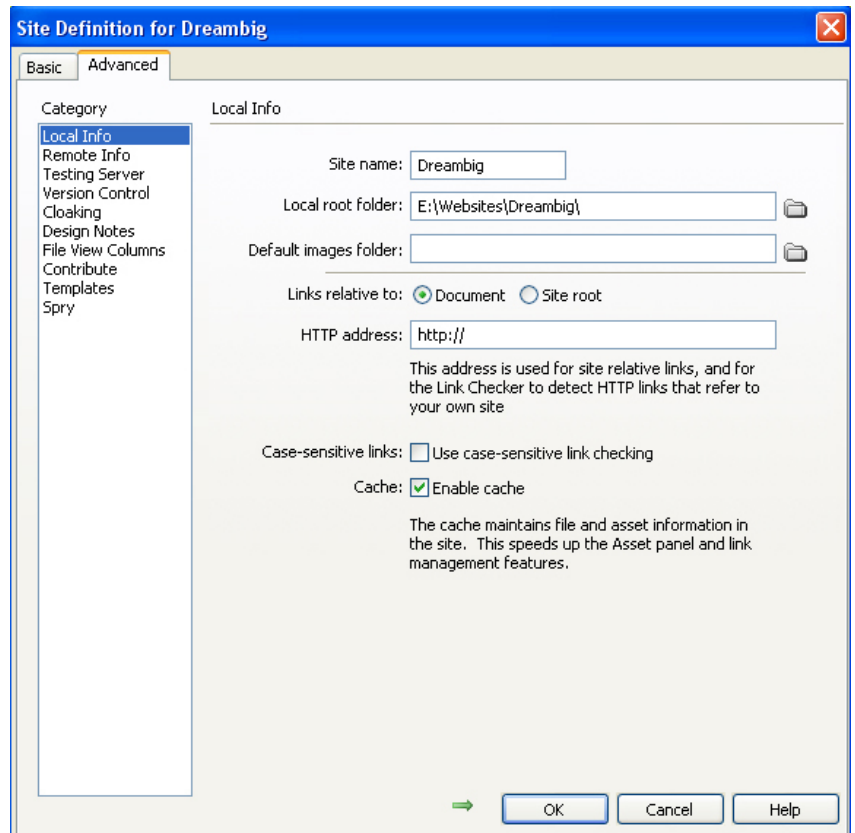
8. Double click the “Dreambig” folder to select it and **press OK**.



9. Press **Select**



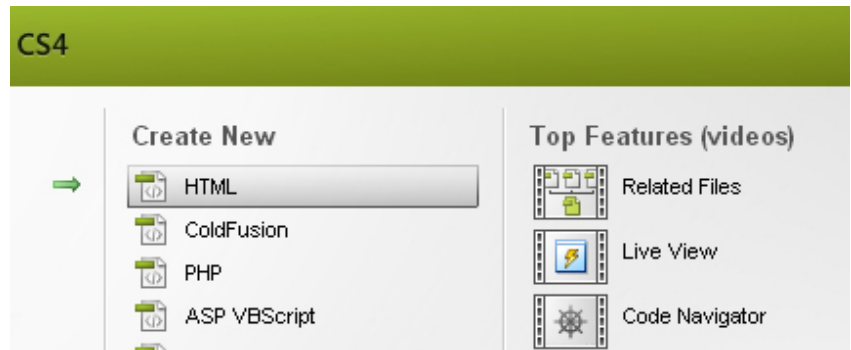
10. At this point **press OK** to save your site. In later tutorials we will come back here and specify remote info to upload the site to the server.



Create and save a new HTML file

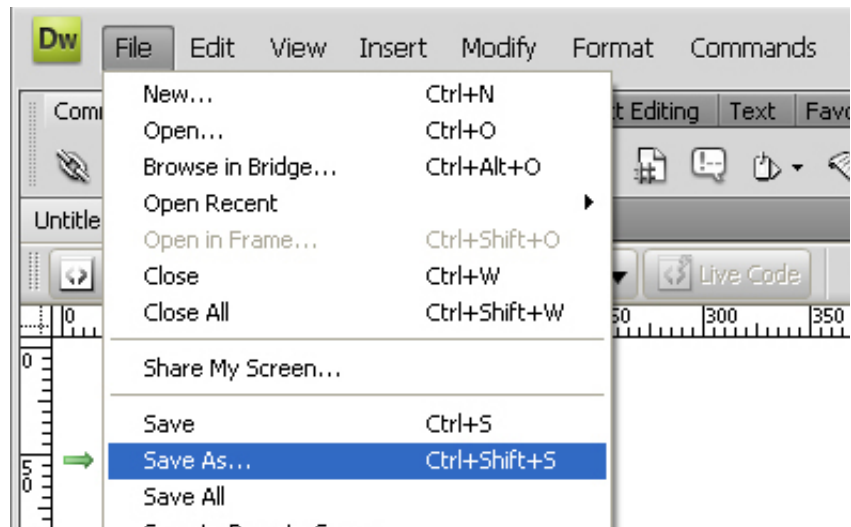
1. **Press the HTML button** on the welcome screen. If you have welcome screen disabled you can enable it by going to:

Edit -> Preferences. Click the General category and check the box next to “Show Welcome screen” option.

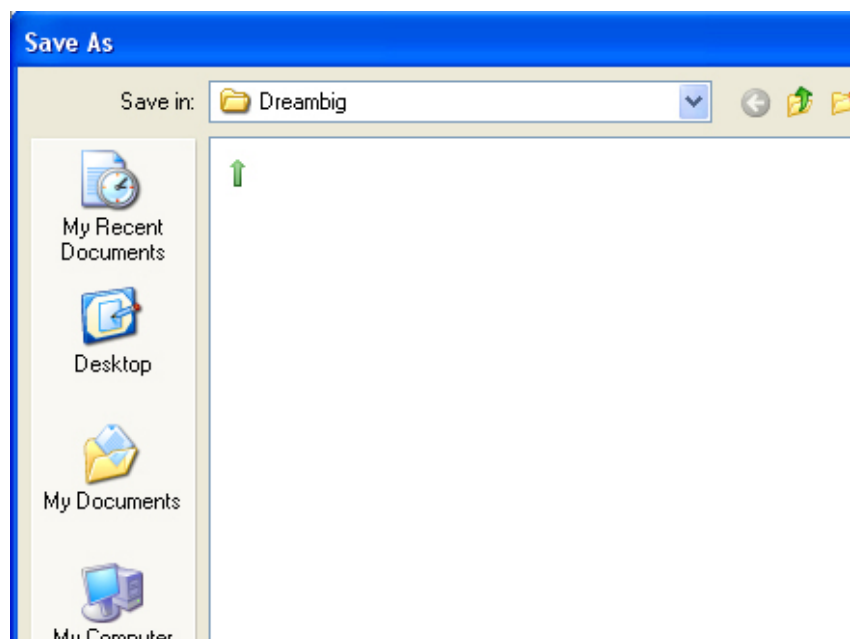


2. A blank “untitled” page will load.

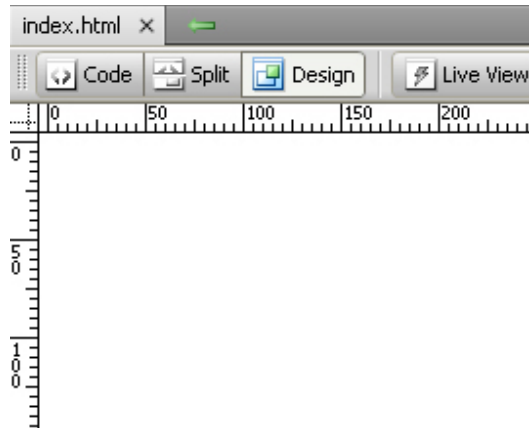
3. Go to **File menu** and select “**Save As...**” option.



4. **Save** the document as “**index**” in your “Dreambig” site folder. Dreamweaver will automatically add .html extension.

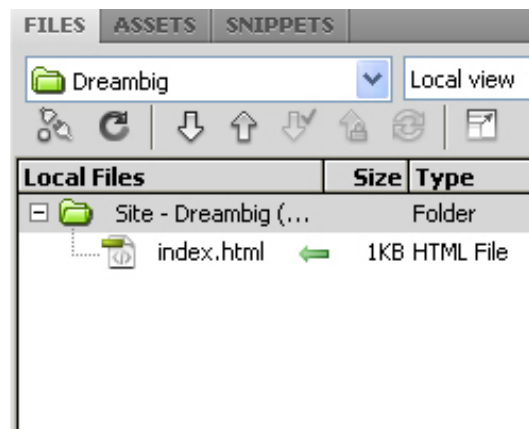


5. Your HTML document is saved and ready to be used.



Note that index.html file is now added to the site folder in Dreamweavers' files panel.

Among other things Files panel is used to rename, delete, move or open your site files.

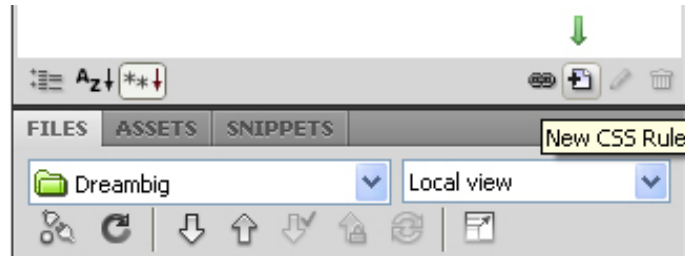


Create a new CSS file and attach it to the HTML file

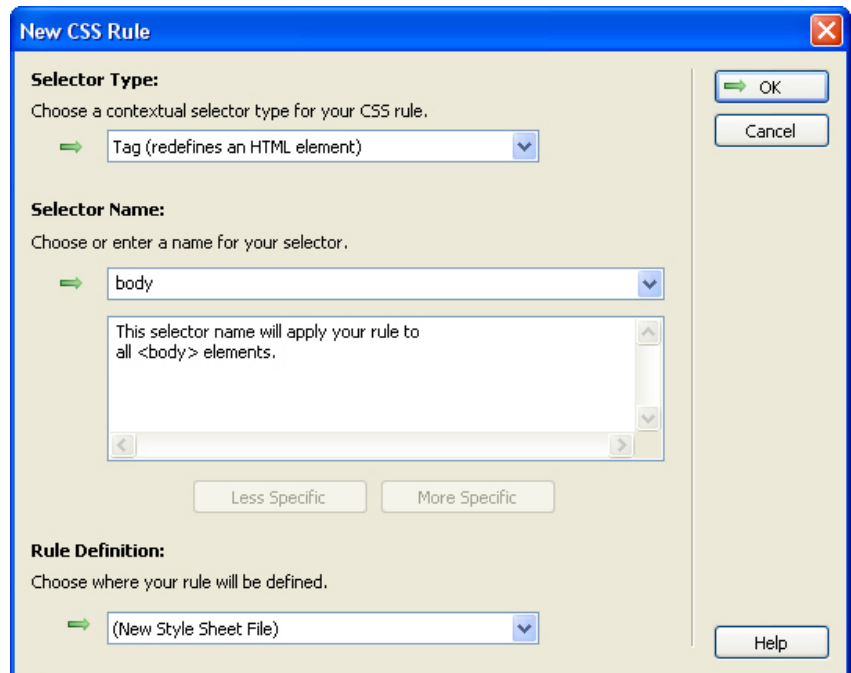
In this section we will achieve following three things by clicking the “New CSS Rule” button in the CSS panel.

1. Create a new CSS file
2. Attach it to the HTML document
3. Define styles for the <body> tag of the page

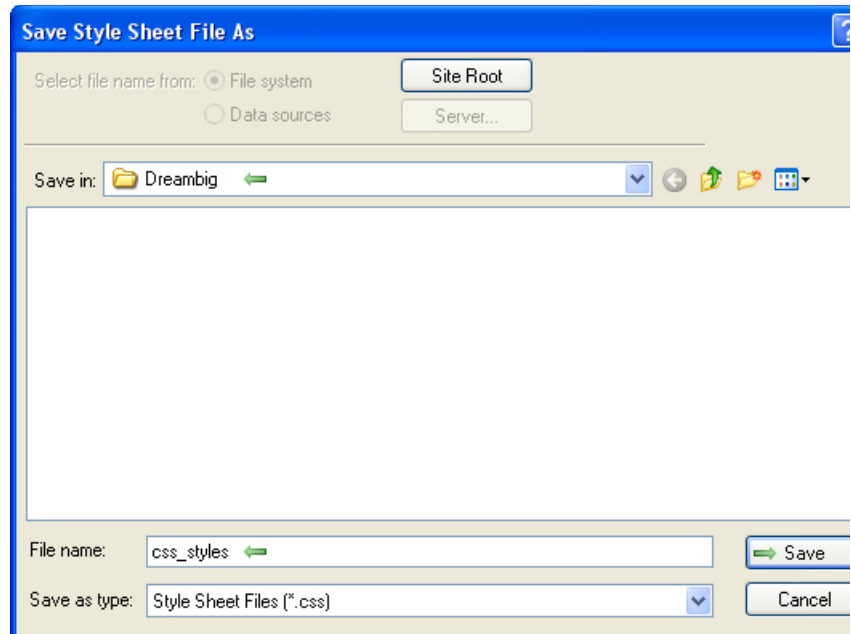
1. Click the “**New CSS Rule**” button in the CSS panel



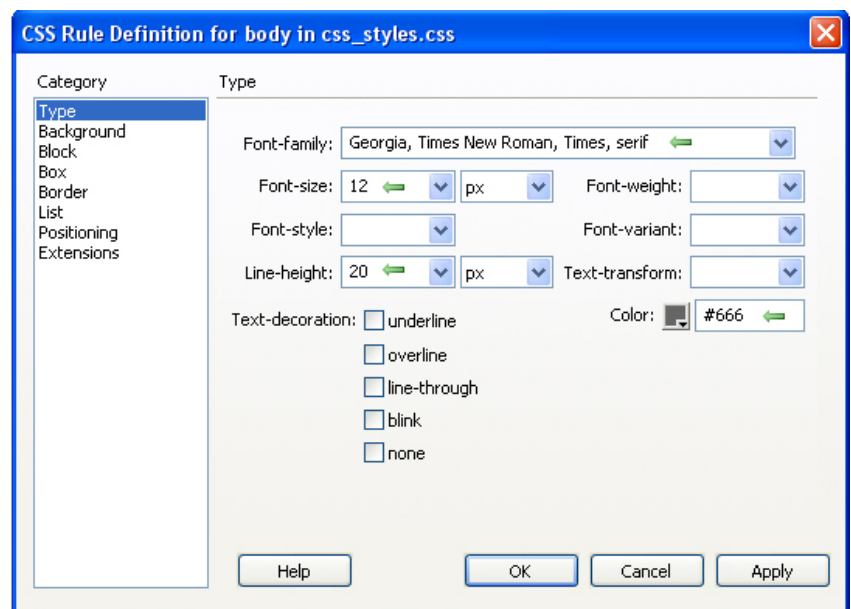
2. In the New CSS Rule window make sure Selector Type is set to **Tag**, Selector Name to **body** and Rule Definition to **(New Style Sheet File)** and press **OK**



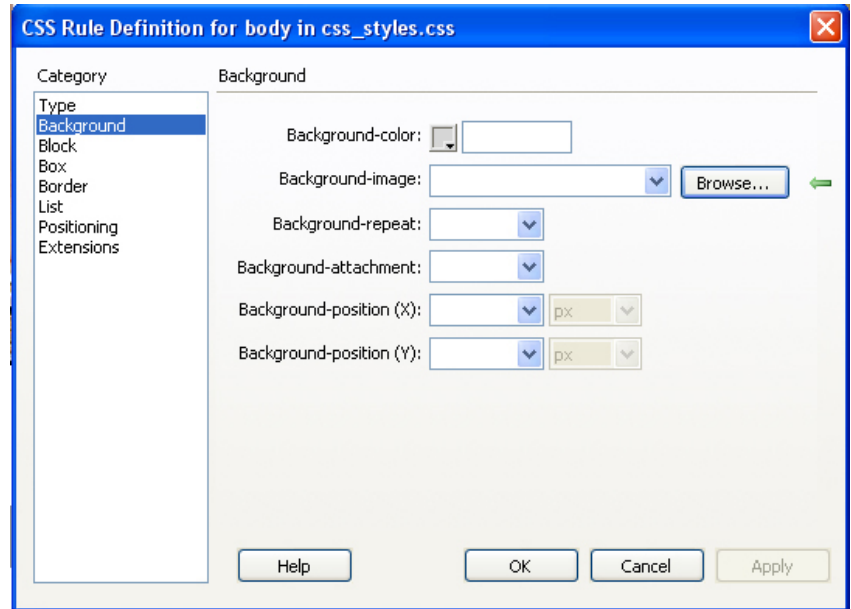
3. Dreamweaver will prompt you to save your style sheet file. **Save it in your Dreambig folder as `css_styles`.** Dreamweaver will add .css extension automatically.



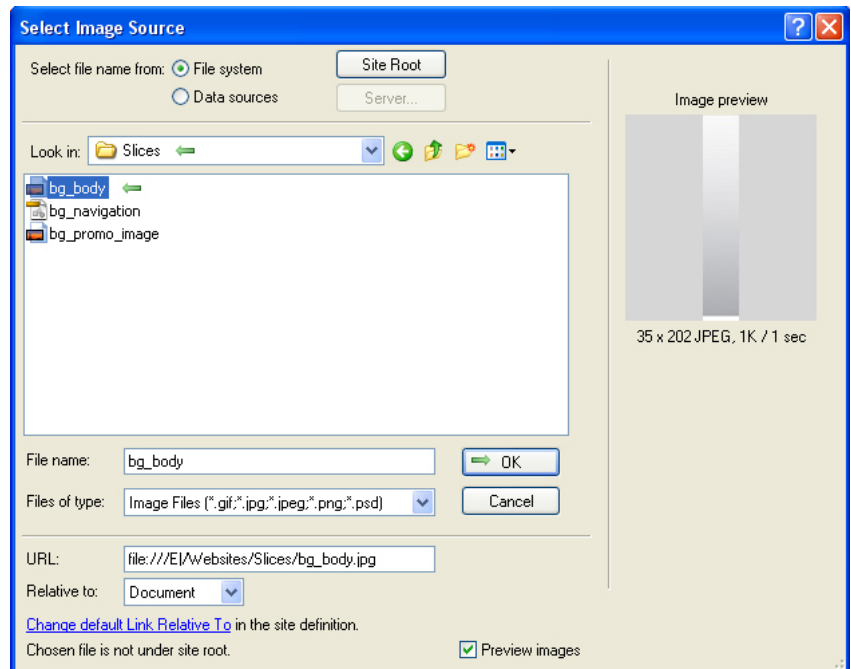
4. Specify **Type** styles as shown in the image. Press **Apply** button. (**Do not click OK**).



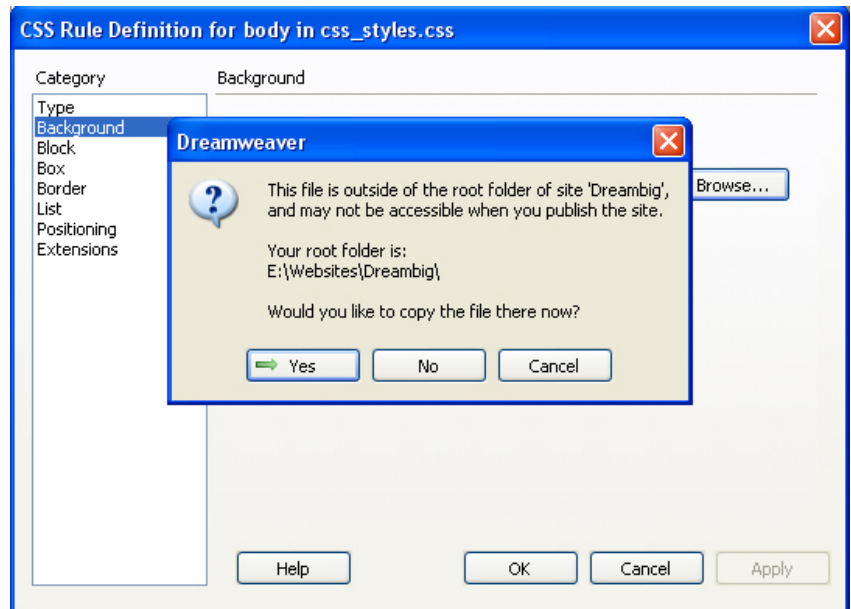
5. Select the “**Background**” category, and click the **Browse** button to navigate to background image we want to use.



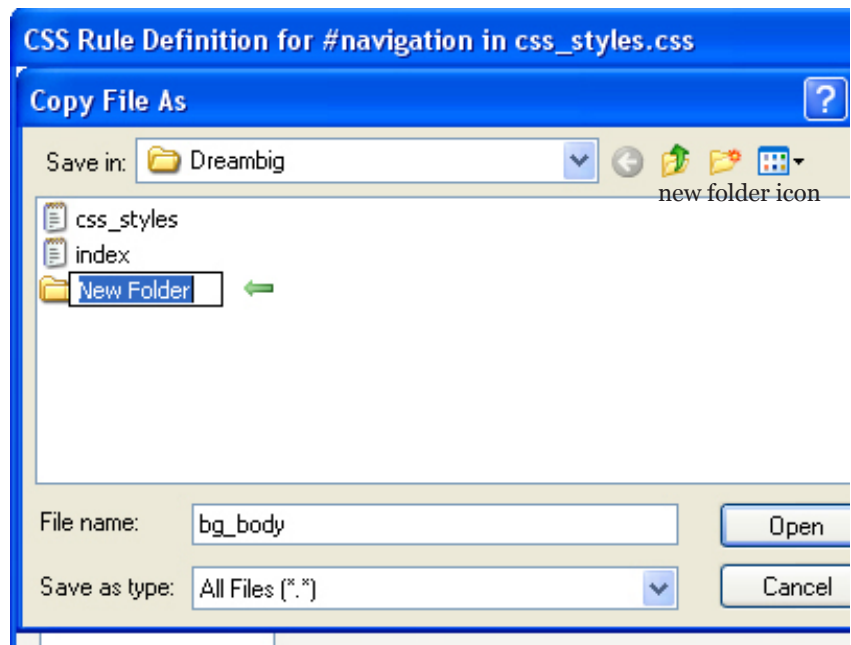
6. Navigate to **Slices** folder you downloaded, select **bg_body.jpg** image and **press OK**.



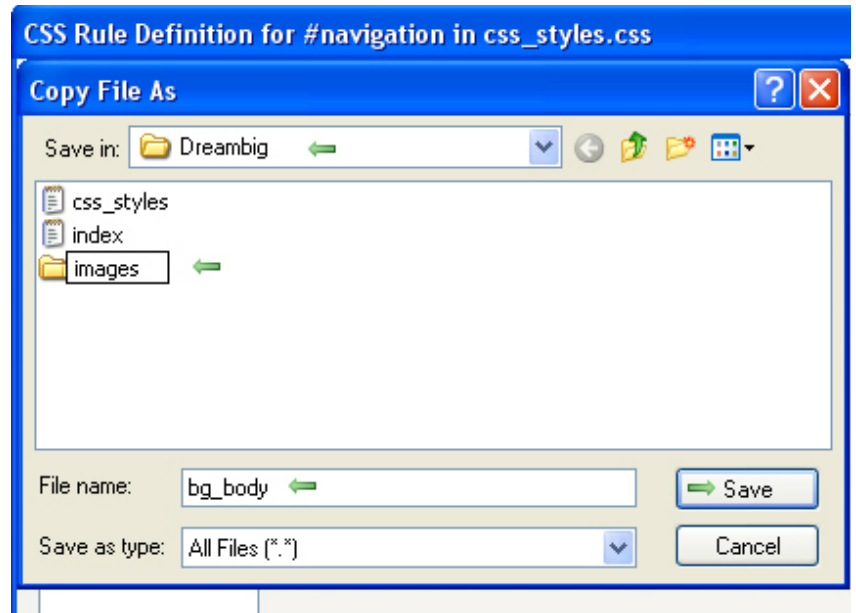
7. Read the warning and **press YES**.



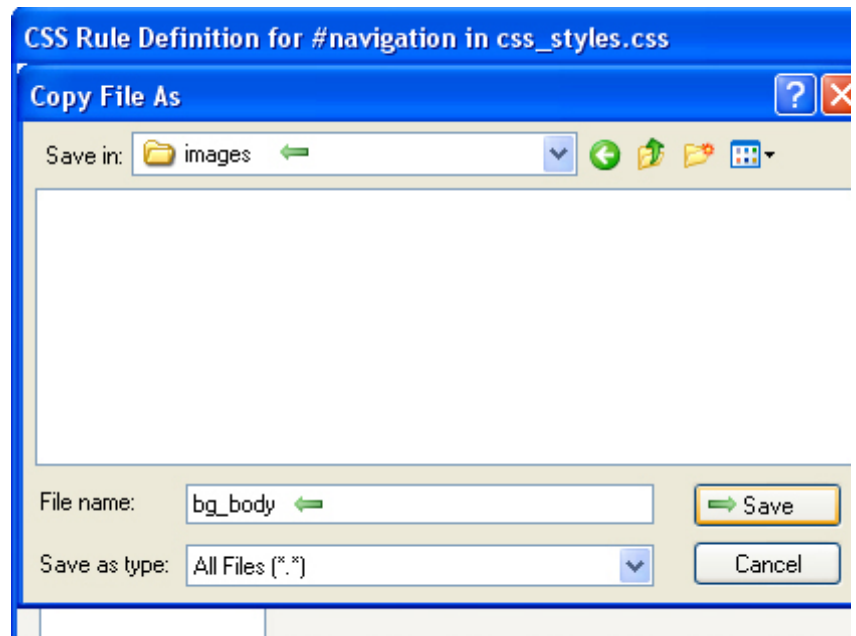
8. Dreamweaver will take you to your site root folder (Dreambig). **Click the New Folder icon**. This will create a new folder and highlight the folder name, making it ready for you to rename it. **Rename the new folder to “images” (all lowercase)**



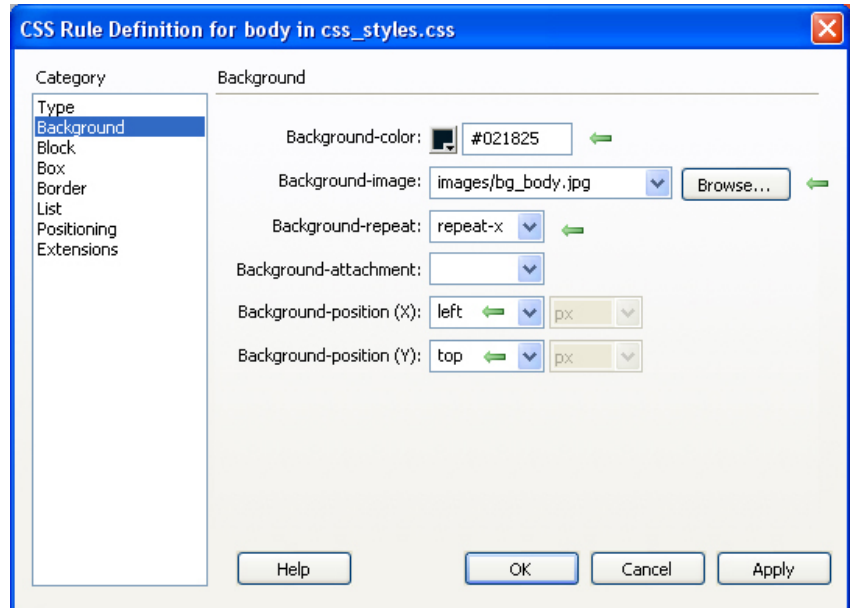
9. **Double-click the images folder** to select it.



10. Click the **Save** button to **save bg_body** inside the **images** folder.

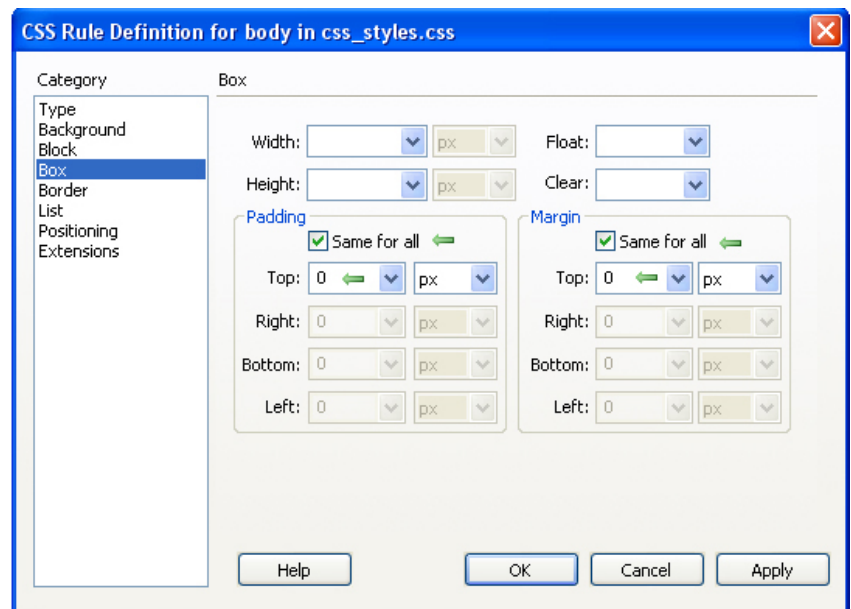


11. Set Background properties to reflect the screen-shot on the right.



12. Click the Box category and specify box properties to reflect the screen-shot below.

13. Press **OK button**.



And you are done creating a new CSS file and attaching it to the index.html document. At this point you should save all your pages.

Go to File->Save All

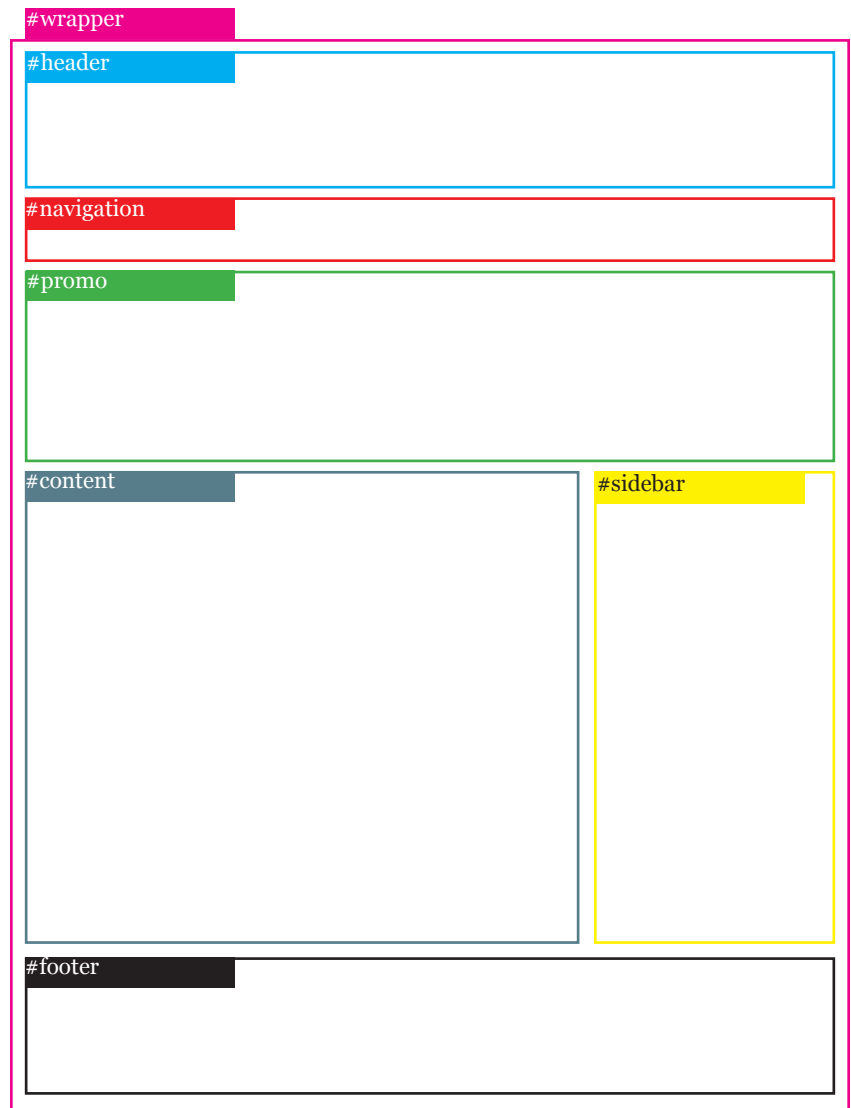
Create a XHTML/CSS layout

In this section we will create our XHTML markup as well as CSS.

Take a look at the illustration of the wireframe and note that we will be inserting our layout elements in following order:

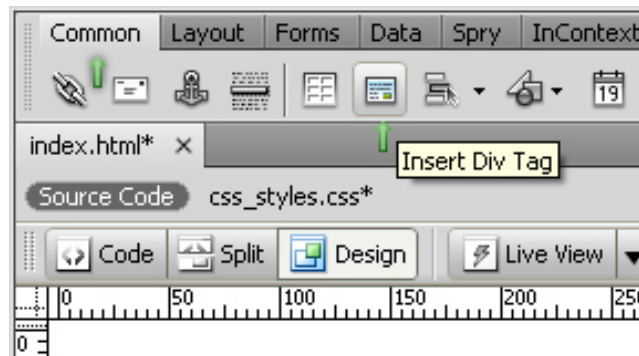
- #wrapper** - At insertion point
- #header** - After start of tag #wrapper
- #navigation** - After tag #header
- #promo** - After tag #navigation
- #content** - After tag #promo
- #sidebar** - After tag #content
- #footer** - After tag #sidebar

All of this will start making more sense after we start inserting tags. As we insert tags we will define CSS properties and values for each one of them.

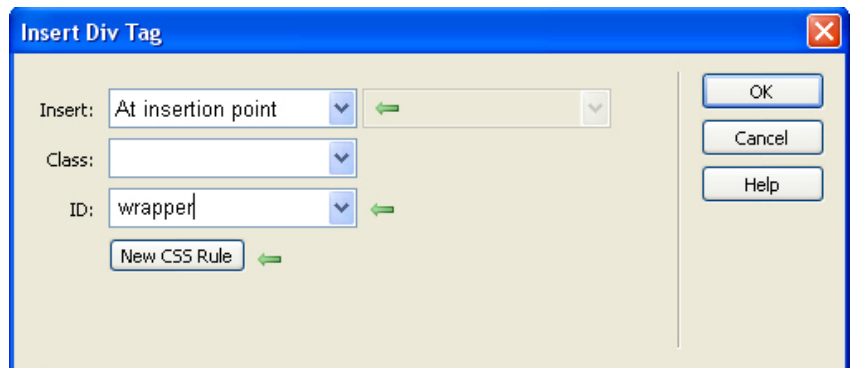


Add #wrapper

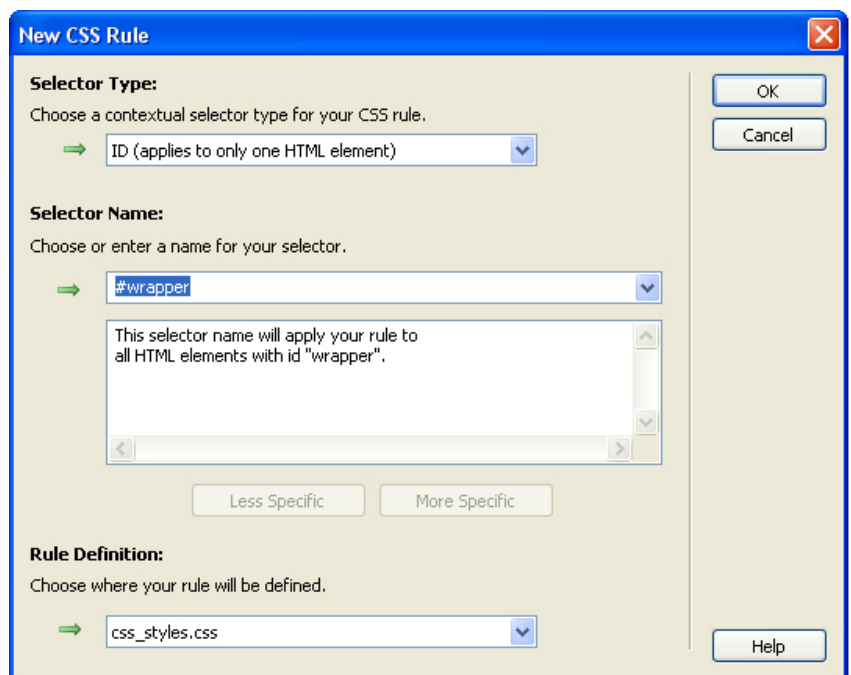
1. Click the **Insert Div Tag** button under the Common tab.



2. From the **Insert** menu select **At insertion point**. Type “**wrapper**” (all lowercase) inside the ID field and press **New CSS Rule** button.

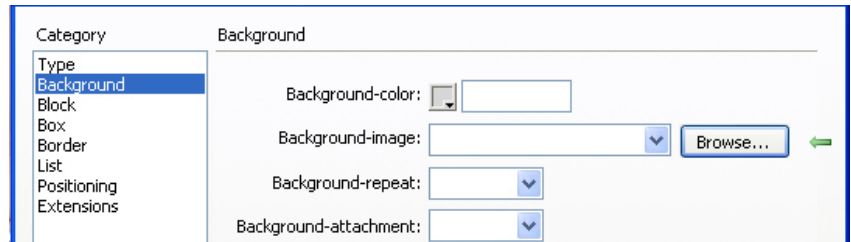


3. In the New CSS Rule window make sure Selector Type is set to **ID**, Selector Name to **#wrapper** and Rule Definition to **css_styles.css** and **press OK**.



4. Select **Background** from the Category menu

5. Press the **Browse** button.

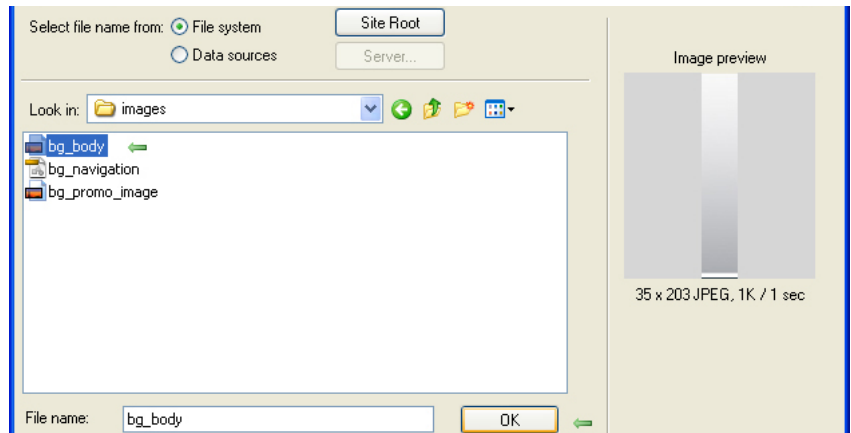


6. Press the **Site Root** button to navigate to your sites folder.

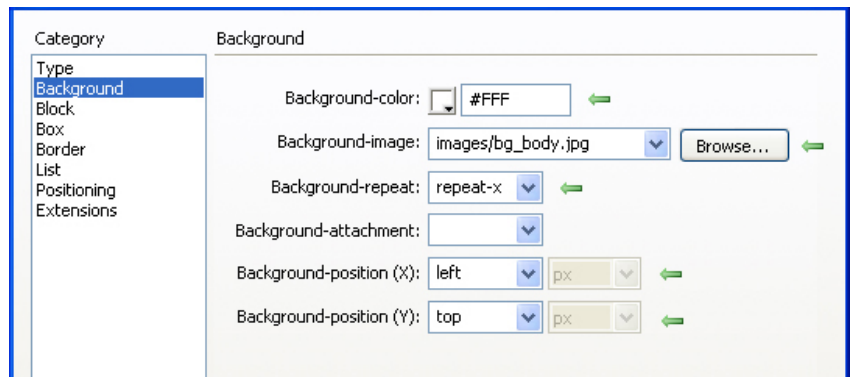
7. **Double-click the images folder**

8. Select **bg_body.jpg** file from the list

9. **Press OK**



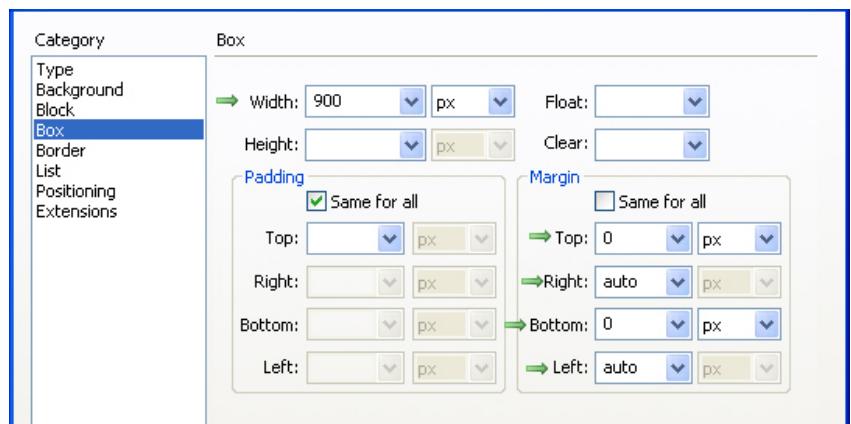
10. Set other background properties as shown in the image. **(Do not click OK when done)**



11. Select **Box** category and set Box properties as shown in the image.

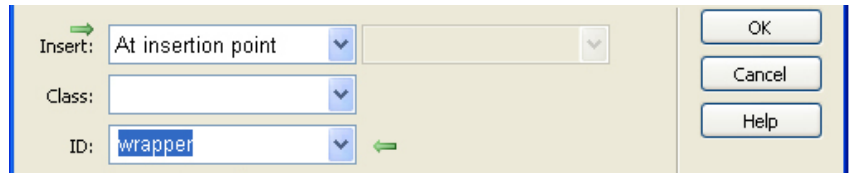
NOTE: Setting margin to 0px, auto, 0px, auto centers the box on the page.

12. **Press OK**



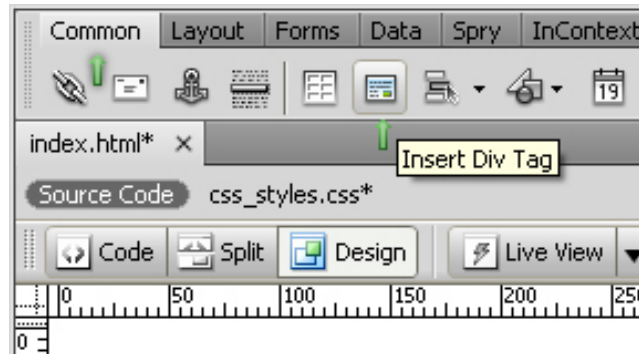
13. **Press OK**

14. Wrapper div is now added to your document.

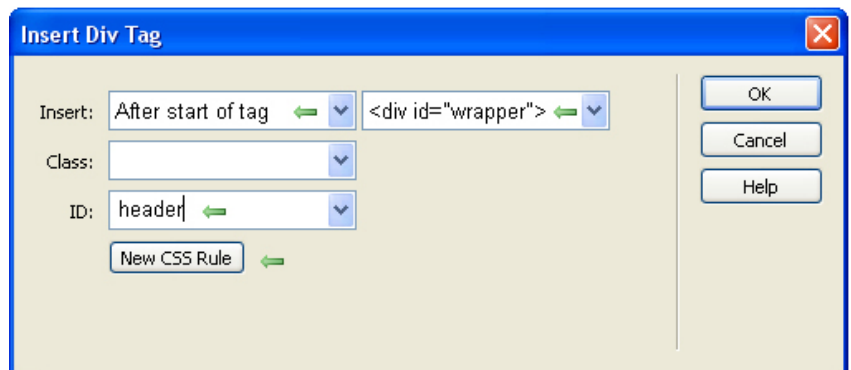


Add #header

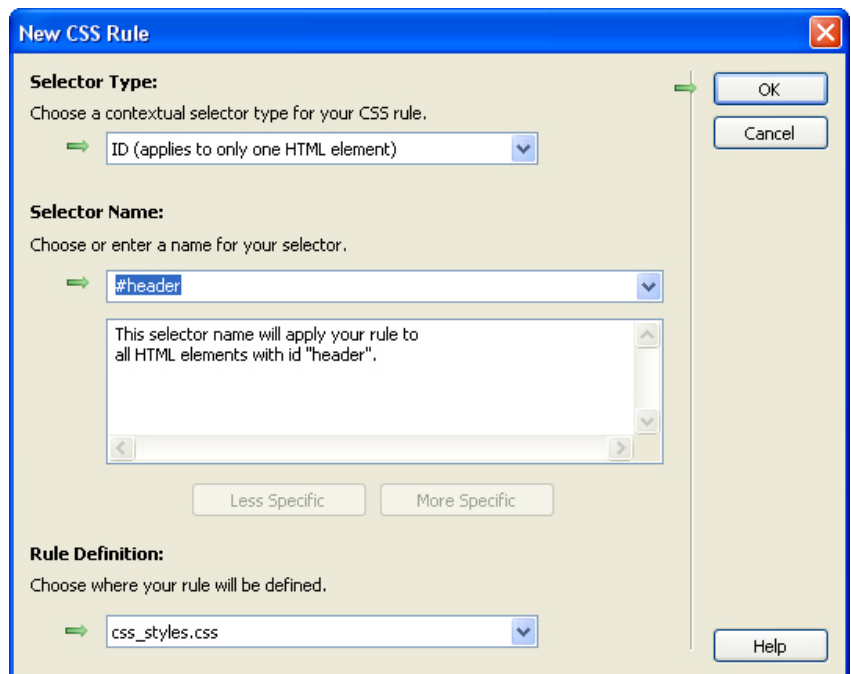
1. Click the **Insert Div Tag** button under the Common tab.



2. From the **Insert** menu select **After start of tag**, and select `<div id="wrapper">` from the second select box. Type in **"header"** (all lowercase) inside the ID field and press **New CSS Rule** button.

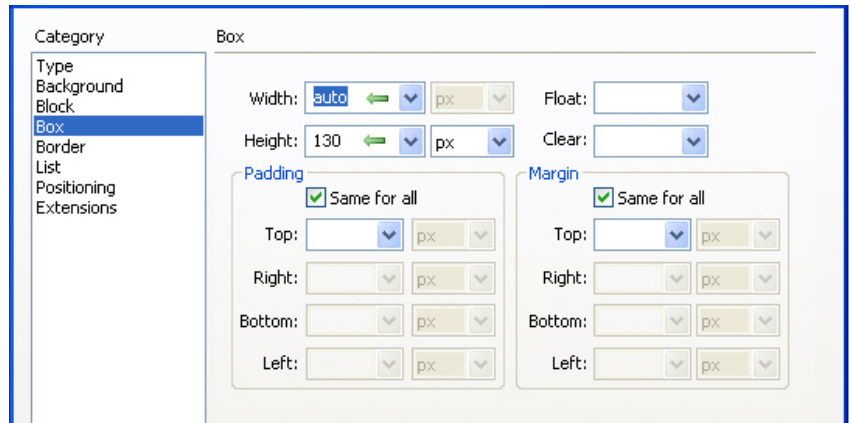


3. In the New CSS Rule window make sure Selector Type is set to **ID**, Selector Name to **#header** and Rule Definition to **css_styles.css** and press **OK**.



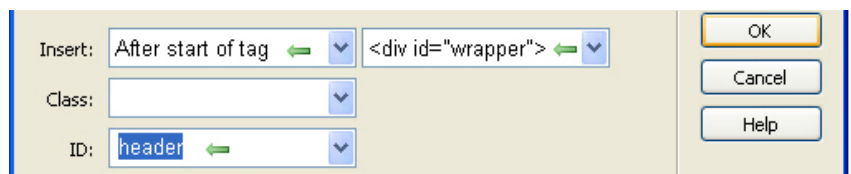
4. Select **Box** category and set Box properties as shown in the image.

5. Press OK



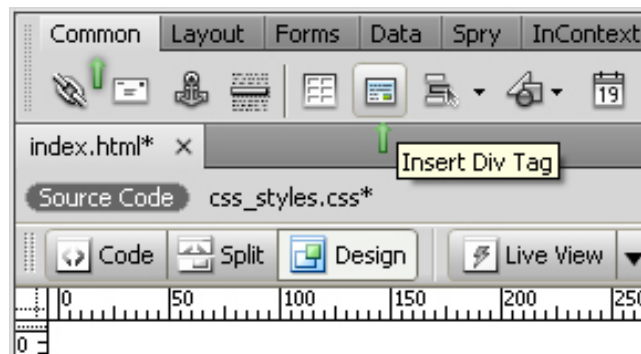
6. Press OK

7. Header div is now added to your document.



Add #navigation

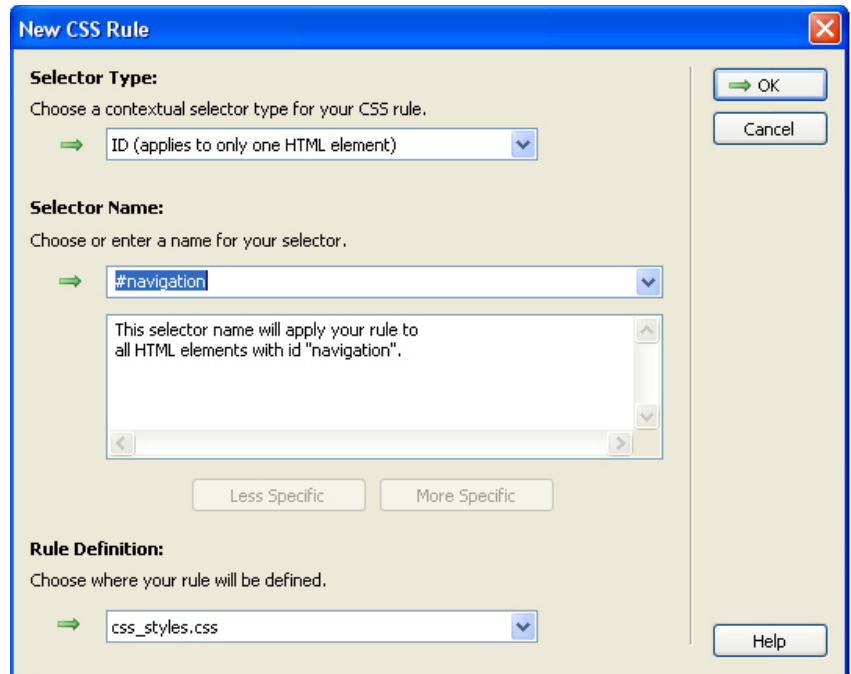
1. Click the **Insert Div Tag** button under the Common tab.



2. From the **Insert** menu select **After tag**, and select `<div id="header">` from the second select box. Type in **"navigation"** (all lowercase) inside the ID field and press **New CSS Rule** button.

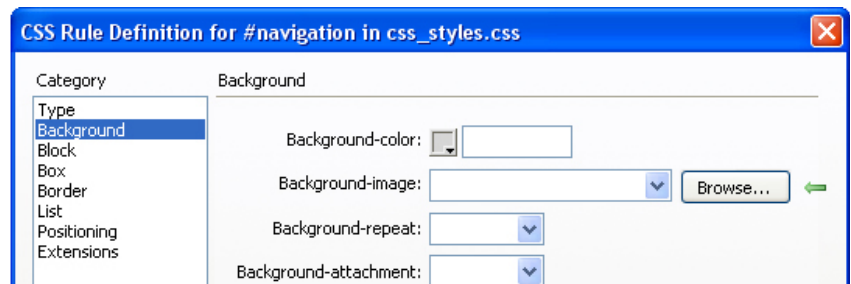


3. In the New CSS Rule window make sure Selector Type is set to **ID**, Selector Name to **#navigation** and Rule Definition to **css_styles.css** and **press OK**.



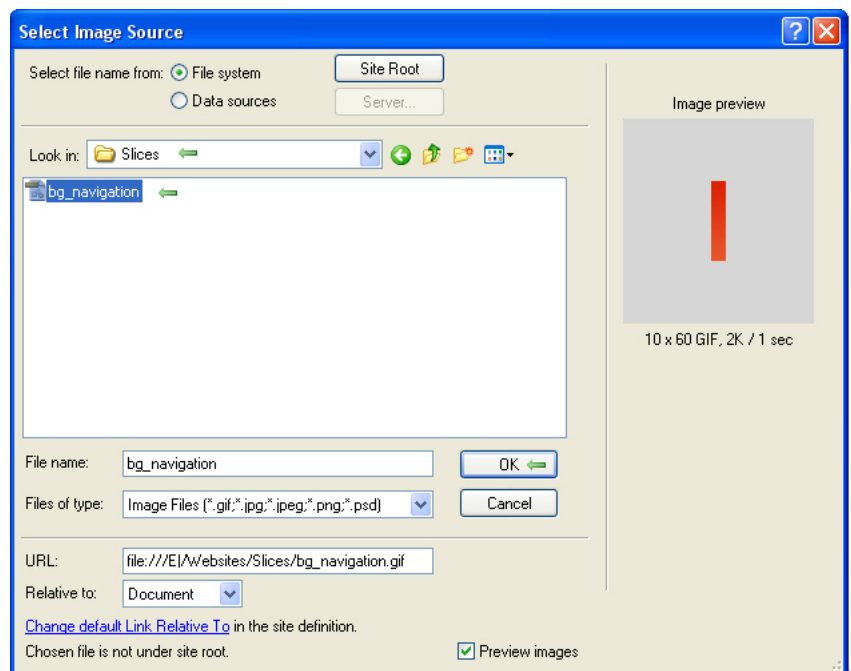
3. Select **Background** from the Category menu

4. Press the **Browse** button.

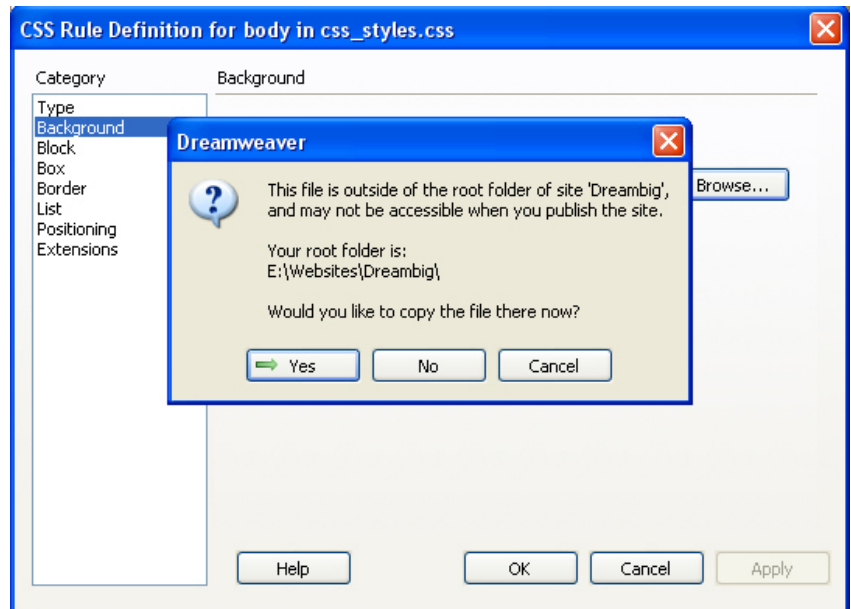


5. Navigate to **Slices** folder you downloaded, select **bg_navigation.jpg** image

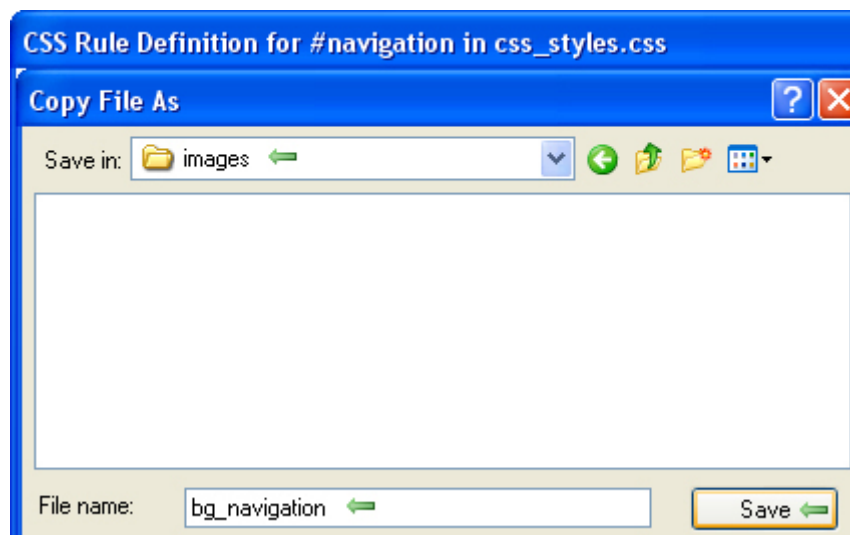
6. **Press OK**.



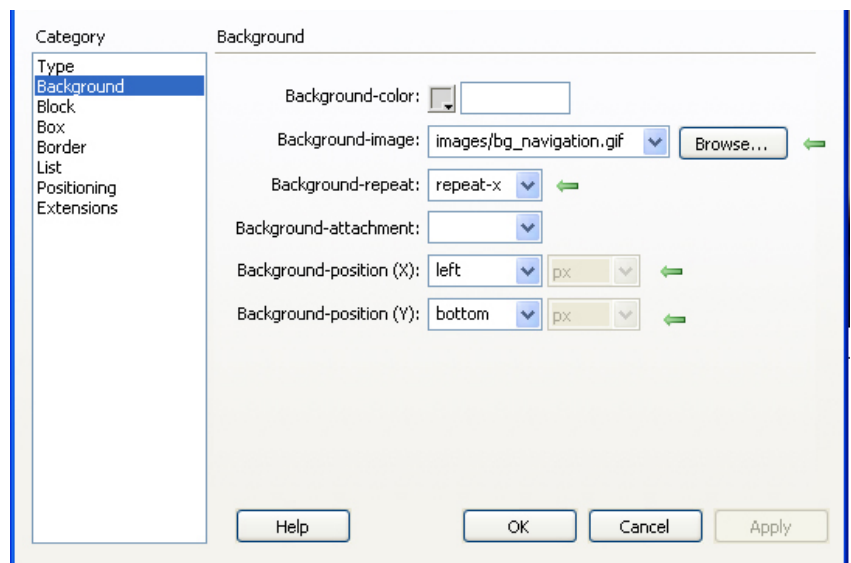
7. Read the warning and **press YES**.



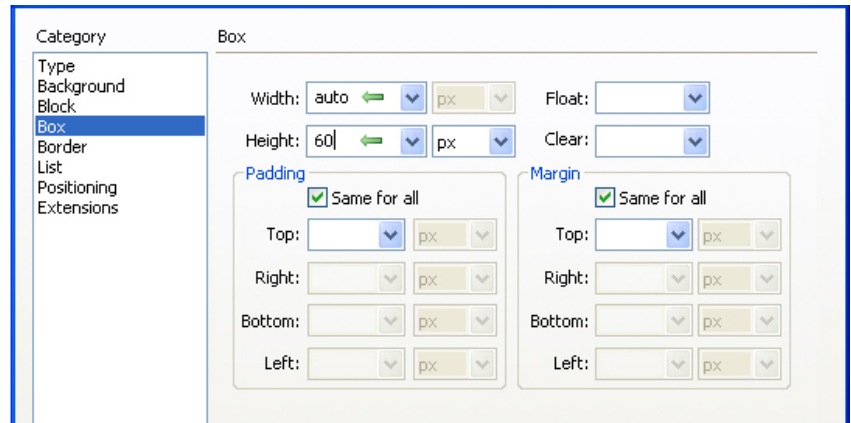
8. Click the **Save** button to save **bg_navigation** inside the **images** folder.



9. Set Background properties to reflect the screen-shot on the right. (**Do not press OK when done**)



10. Select **Box** category and set Box properties as shown in the image. **(Do not press OK when done)**



11. Select **Border** category and set Border properties as shown in the image.

12. Press OK



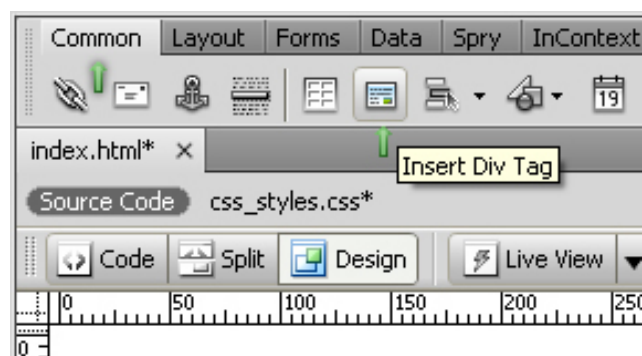
13. Press OK

14. Navigation div is now added to your document.

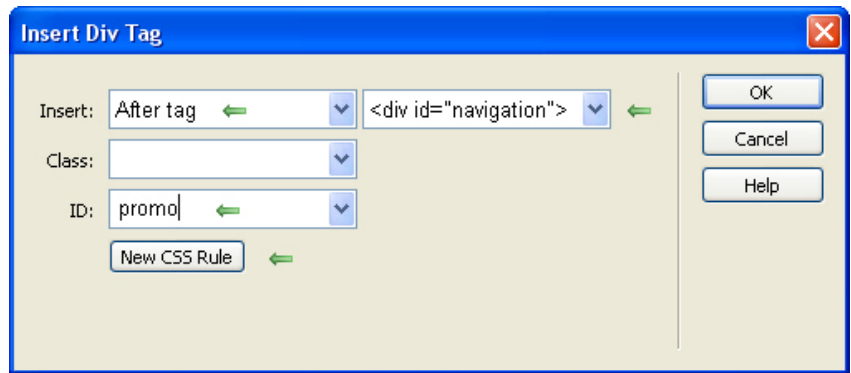


Add #promo

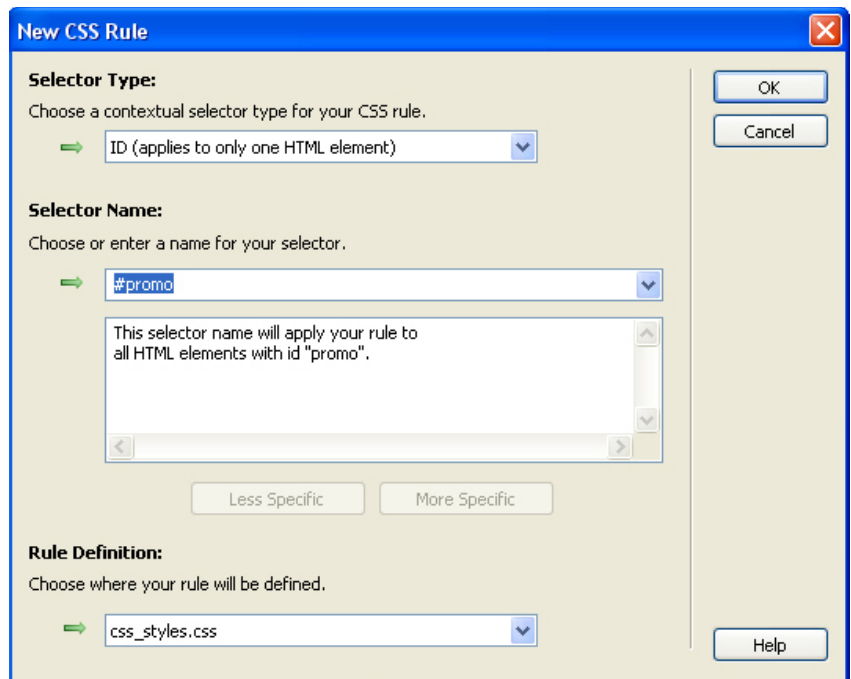
1. Click the **Insert Div Tag** button under the Common tab.



2. From the **Insert** menu select **After tag**, and select `<div id="navigation">` from the second select box. Type in **promo** (all lowercase) inside the ID field and press **New CSS Rule** button.

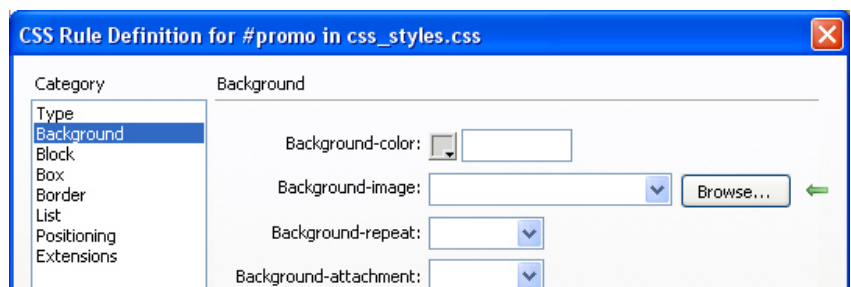


3. In the New CSS Rule window make sure Selector Type is set to **ID**, Selector Name to **#promo** and Rule Definition to **css_styles.css** and press **OK**.



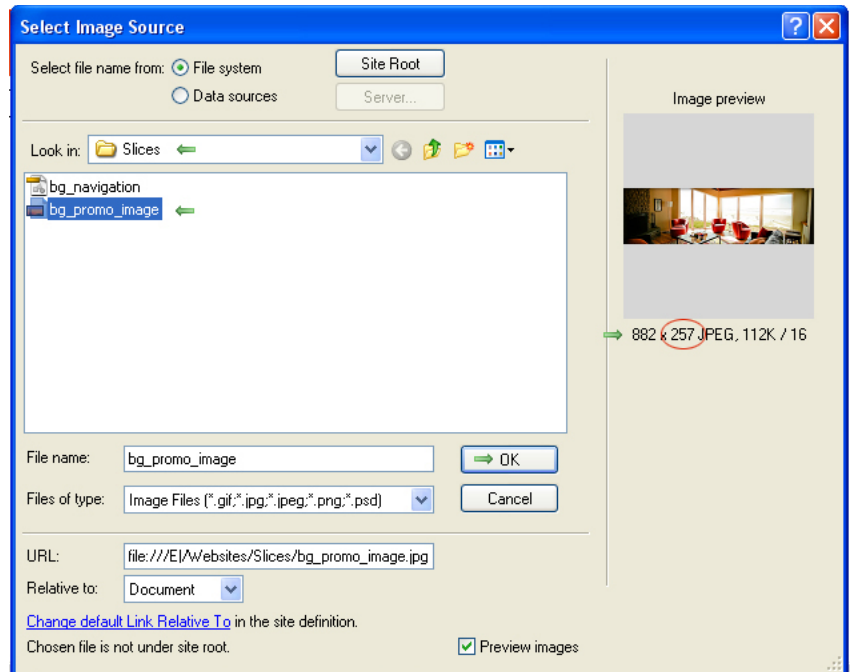
4. Select **Background** from the Category menu

5. Press the **Browse** button.

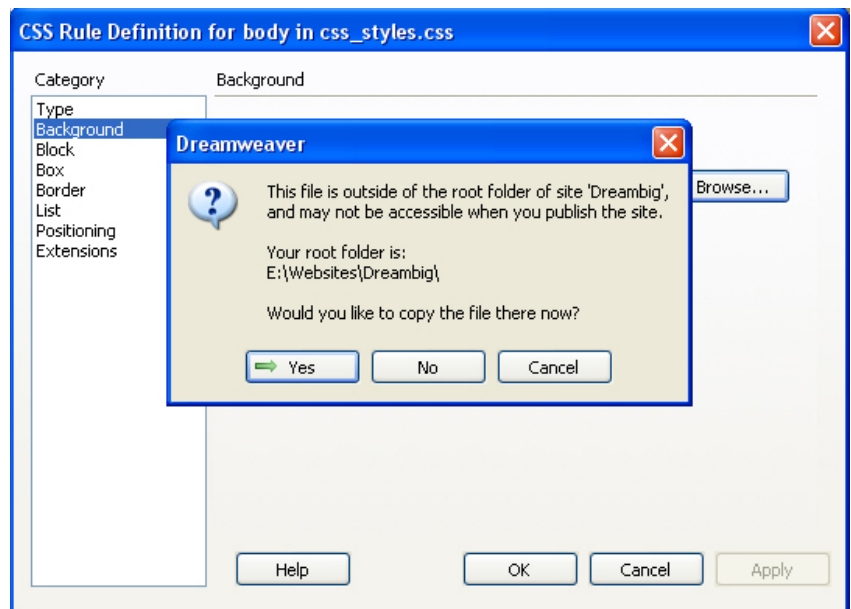


6. Navigate to **Slices folder** you downloaded, select **bg_promo_image.jpg** image and note the height of the image “257”. We will use this number when we specify the height of the promo element later.

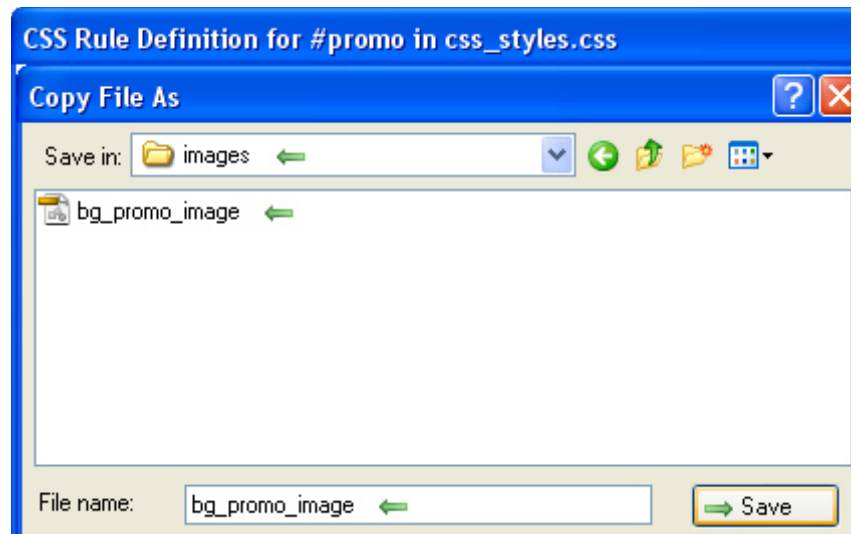
7. **Press OK.**



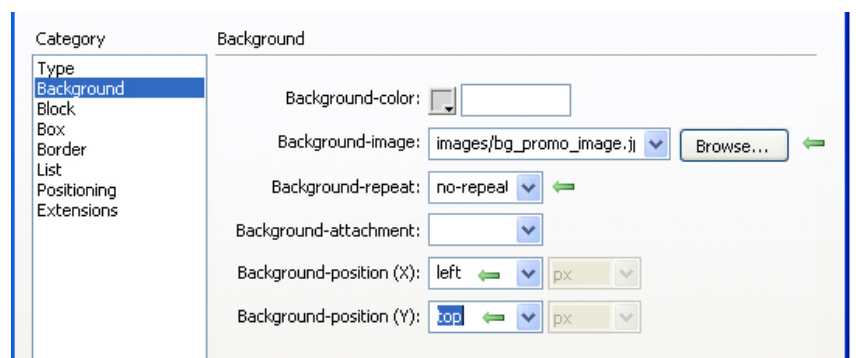
8. Read the warning and **press YES.**



9. Click the **Save** button to **save** **bg_promo_image** inside the **images** folder.

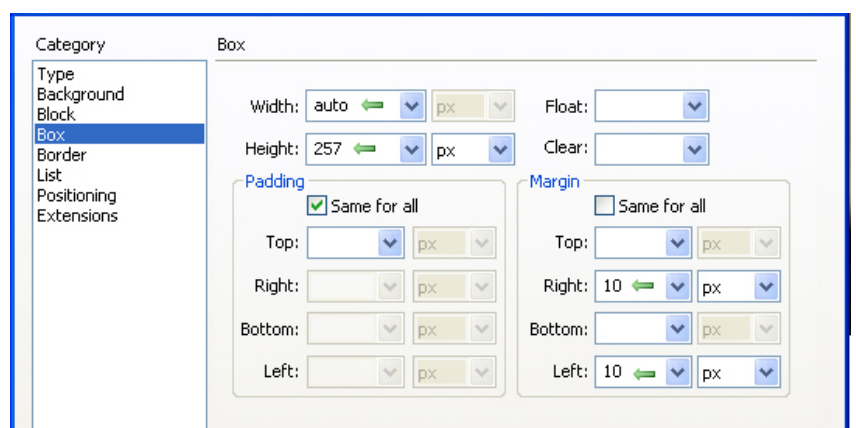


10. Set Background properties to reflect the screen-shot on the right. (**Do not press OK when done**)



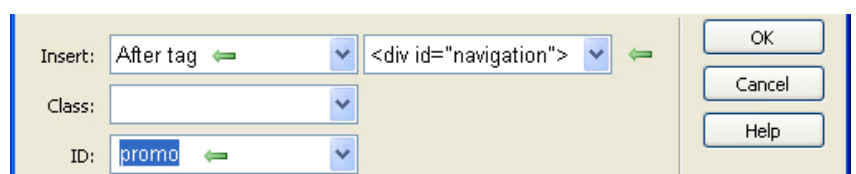
11. Select **Box** category and set Box properties as shown in the image.

12. **Press OK**



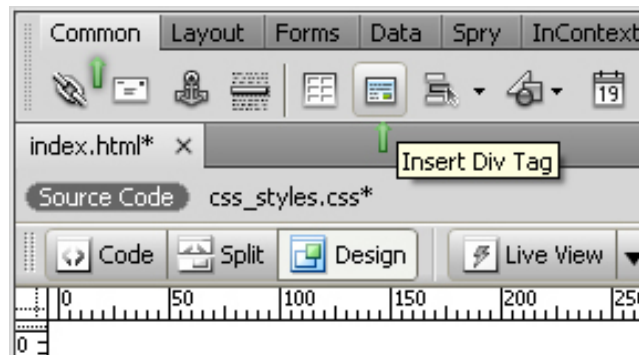
13. **Press OK**

14. Promo div is now added to your document.



Add #content

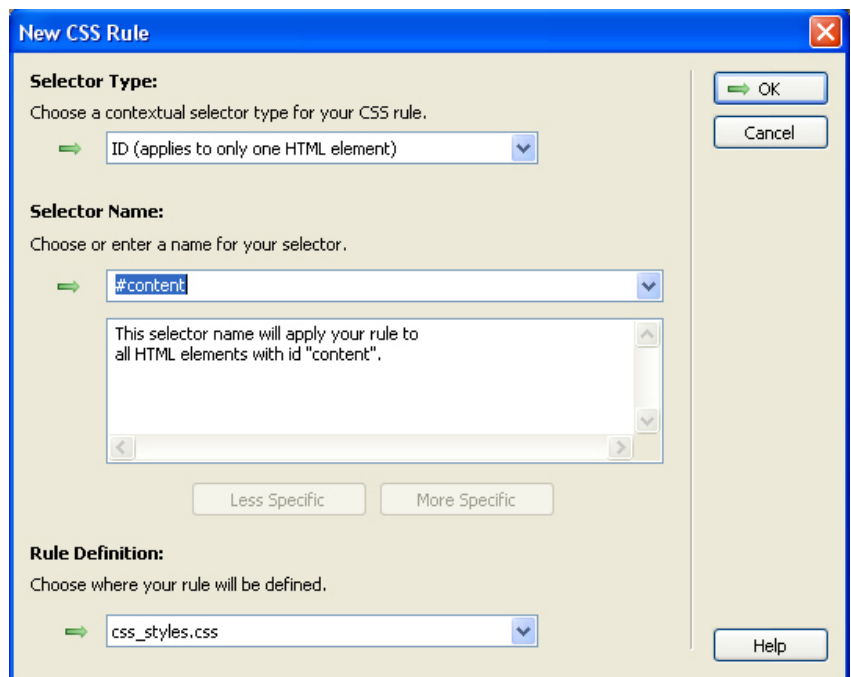
1. Click the **Insert Div Tag** button under the Common tab.



2. From the **Insert** menu select **After tag**, and select `<div id="promo">` from the second select box. Type in **content** (all lowercase) inside the ID field and press **New CSS Rule** button.

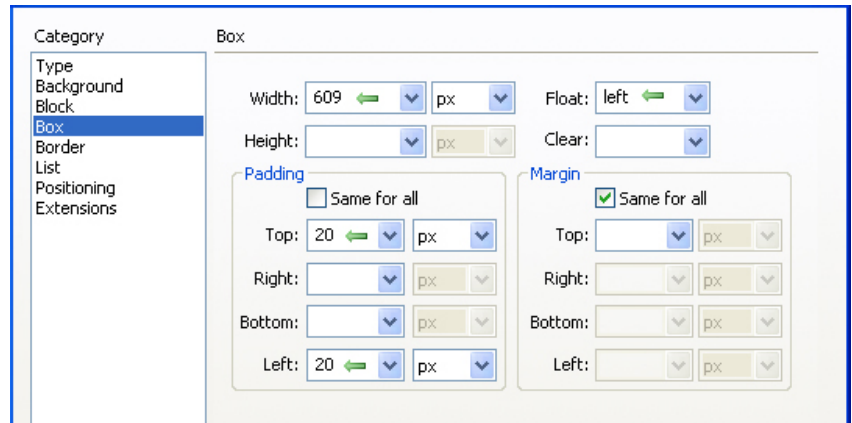


3. In the New CSS Rule window make sure Selector Type is set to **ID**, Selector Name to **#content** and Rule Definition to **css_styles.css** and press **OK**.



4. Select **Box** category and set Box properties as shown in the image.

5. Press OK



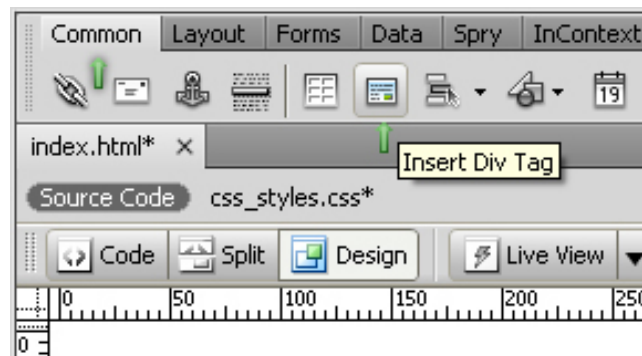
6. Press OK

7. Content div is now added to your document.

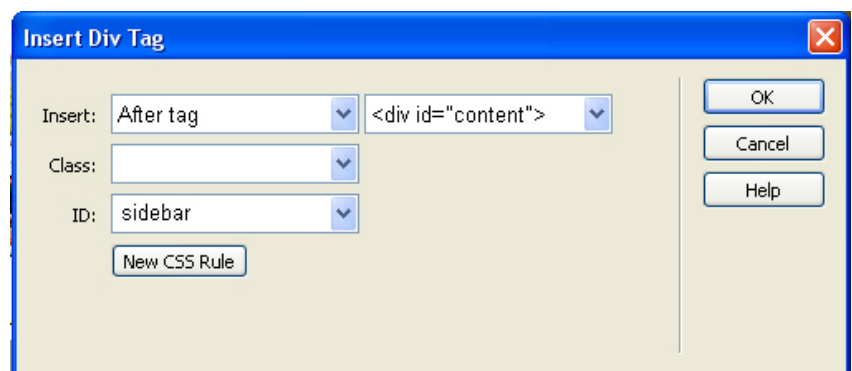


Add #sidebar

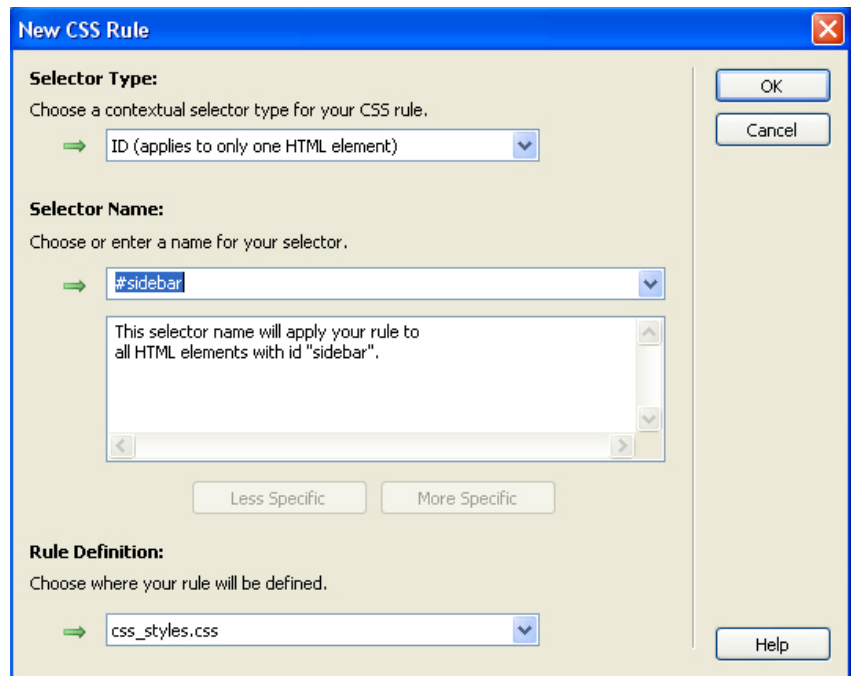
1. Click the **Insert Div Tag** button under the Common tab.



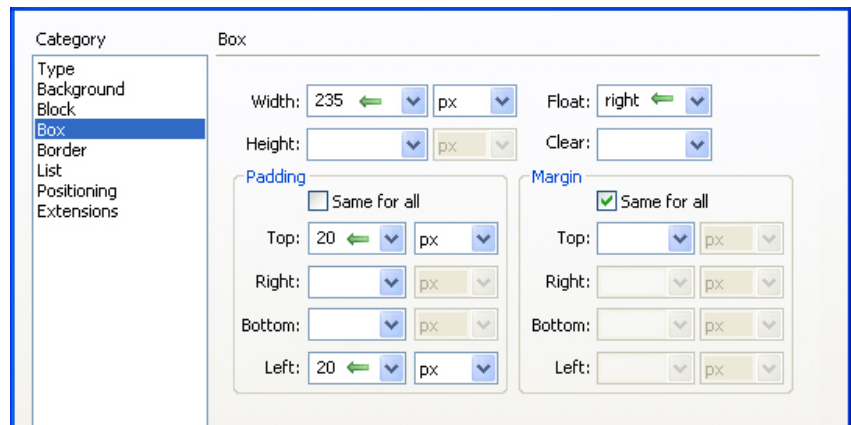
2. From the **Insert** menu select **After tag**, and select **<div id="content">** from the second select box. Type in **"sidebar"** (all lowercase) inside the ID field and press **New CSS Rule** button.



3. In the New CSS Rule window make sure Selector Type is set to **ID**, Selector Name to **#sidebar** and Rule Definition to **css_styles.css** and **press OK**.

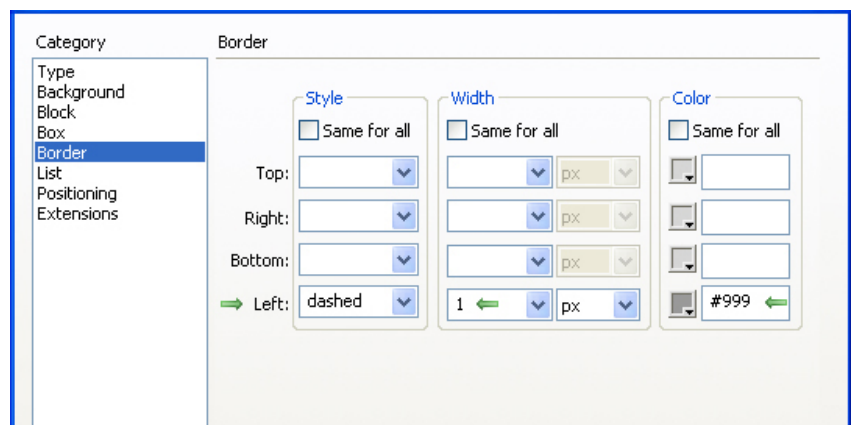


4. Select **Box** category and set Box properties as shown in the image. (**Do not press OK when done**)



5. Select **Border** category and set Border properties as shown in the image.

6. **Press OK**



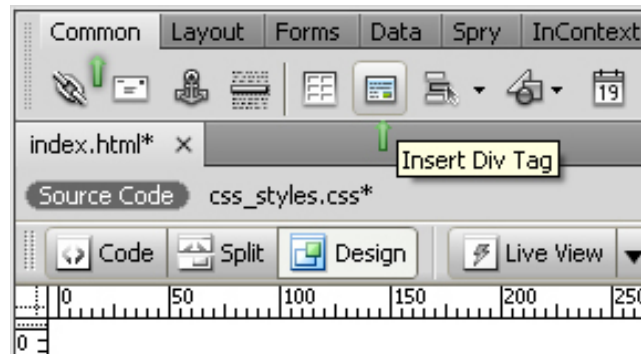
7. **Press OK**

8. Sidebar div is now added to your document.

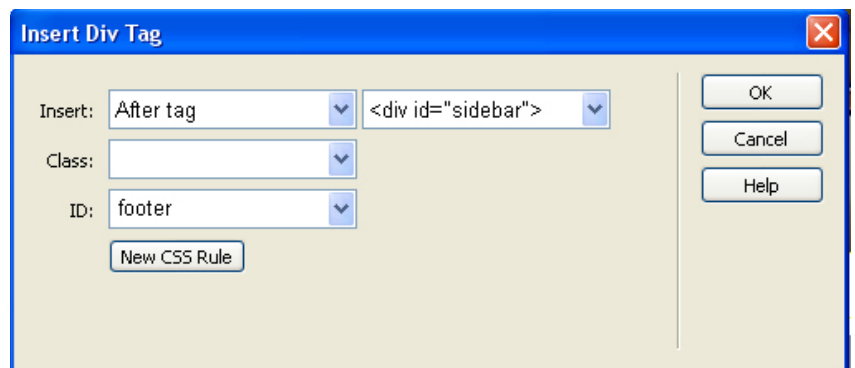


Add #footer

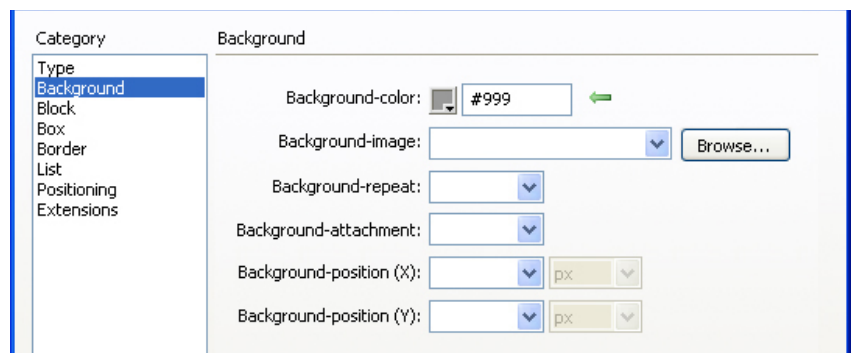
1. Click the **Insert Div Tag** button under the Common tab.



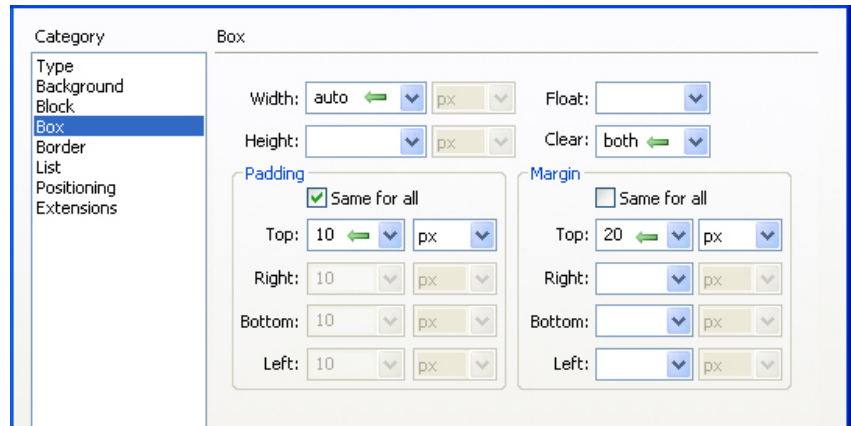
2. From the **Insert** menu select **After tag**, and select **<div id="sidebar">** from the second select box. Type in **"sidebar"** (all lowercase) inside the ID field and press **New CSS Rule** button.



3. Set Background properties to reflect the screen-shot on the right. **(Do not press OK when done)**

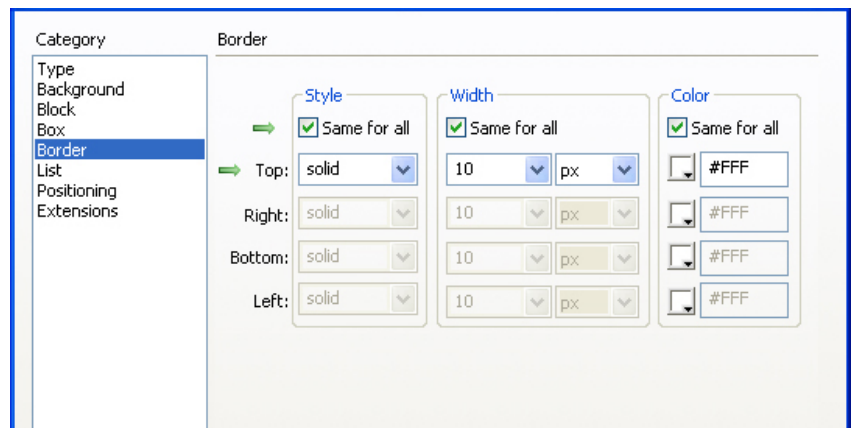


4. Select **Box** category and set Box properties as shown in the image. **(Do not press OK when done)**



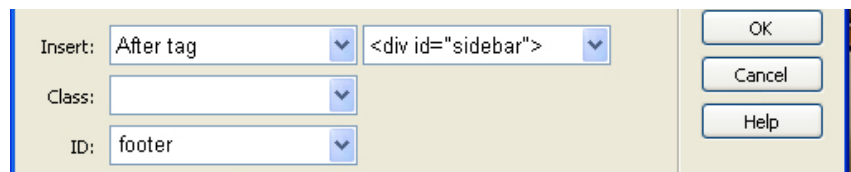
5. Select **Border** category and set Border properties as shown in the image.

6. Press OK



7. Press OK

8. Footer div is now added to your document.



All layout elements are now inserted in our document.

Go to File->Save All

Little clean up

Locate the text “Content for “wrapper” div goes here and highlight it.

NOTE: Make sure to not drag your mouse too far as you could accidentally select and delete “footer” div.

Once highlighted press “Delete” or “Backspace” key on your keyboard.



You are done!

